



proterra™

Now available as two complete texture offerings: smooth and split!

For projects that demand a complete retaining wall system, Oaks Proterra™ wall featuring M-Lock technology delivers a stable structure, even in true vertical installations. This engineered wall incorporates reversible split/smooth texture surfaces (with false joints on the smooth surfaces) to allow for added patterning and multiple design options. Built-in cutting guides for ½ blocks and 45° corners are included. The coping-step unit is stocked in colours as an attractive, stand-alone system.



Wall: Proterra™, Natural (Split)
Paver: Enviro Midori, Champagne

SMOOTH UNITS



Standard Unit
 Width 1000mm (39.37")
 Height 185mm (7.28")
 Depth 375mm (14.76")
 Smooth on both faces
Individually Packaged



Double Unit
 Width 1000mm (39.37")
 Height 185mm (7.28")
 Depth 750mm (29.52")
 Split on one face,
 smooth on one face
**Packaged with similar
 Standard Unit**



Triple Unit
 Width 1000mm (39.37")
 Height 185mm (7.28")
 Depth 1125mm (44.29")
 Smooth on both faces
Individually Packaged



Coping Corner/End Unit
 Width 1000mm (39.37")
 Height 185mm (7.28")
 Depth 430mm (16.92")
 Smooth on both faces
 and closed end
Individually Packaged



Standard Corner Unit
 Width 1000mm (39.37")
 Height 185mm (7.28")
 Depth 375mm (14.76")
 Smooth on both faces
 and closed end
Individually Packaged



Coping-Step Unit
 Width 1000mm (39.37")
 Height 185mm (7.28")
 Depth 430mm (16.92")
 Smooth on both faces
Individually Packaged

SMOOTH COLORS

Note: Coloured wall units also available as custom order. Minimum quantities apply.



GREYFIELD - Smooth

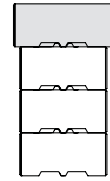


NATURAL - Smooth



TIMBERWOOD - Smooth

Proterra™ Smooth Coping



Smooth
 Coping and Wall
 (Coping centres over wall)

SPECIFICATIONS

| PROTERRA™ (SMOOTH) | Bundle Specifications | | | | | Per Section Specifications | | | | | |
|------------------------|-----------------------|---------|----------|--------|--------|----------------------------|---------|----------|--------|--------|--------------|
| | Layers | Sq. Ft. | Lin. Ft. | Pieces | Weight | Sections | Sq. Ft. | Lin. Ft. | Pieces | Weight | Weight/Piece |
| Standard Unit | 3 | 18 | 29.5 | 9 | 3150 | Layer | 6 | 9.8 | 3 | 1050 | 350 |
| Standard | 3 | 6 | 9.8 | 3 | 3150 | Layer | 2 | 3.3 | 1 | 1050 | 350 |
| Double | | 6 | 9.8 | 3 | | 2 | 3.3 | 1 | 700 | | |
| Triple | 3 | 6 | 9.8 | 3 | 3150 | Layer | 2 | 3.3 | 1 | 1050 | 1050 |
| Standard Corner | 3 | 24.6 | 40.6 | 9 | 3150 | Layer | 8.2 | 13.5 | 3 | 1050 | 350 |
| Coping-Step Unit | 3 | 12 | 19.6 | 6 | 2388 | Layer | 4 | 6.5 | 2 | 796 | 398 |
| Coping Corner/End Unit | 3 | 17.1 | 28.1 | 6 | 2400 | Layer | 5.7 | 9.4 | 2 | 800 | 400 |

SPLIT UNITS



Standard Unit
 Width 1000mm (39.37")
 Height 185mm (7.28")
 Depth 375mm (14.76")
 Two units split on one face,
 smooth on one face
 One unit split on both faces
Individually Packaged



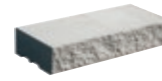
Double Unit
 Width 1000mm (39.37")
 Height 185mm (7.28")
 Depth 750mm (29.52")
 Split on one face,
 smooth on one face
**Packaged with similar
 Standard Unit**



Coping Corner/End Unit
 Width 875mm (34.44")
 Height 185mm (7.28")
 Depth 430mm (16.92")
 Split on front face and
 closed end
Individually Packaged



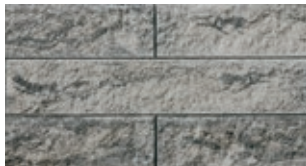
Standard Corner Unit
 Width 875mm (34.44")
 Height 185mm (7.28")
 Depth 375mm (14.76")
 Split on front face and
 closed end
Individually Packaged



Coping-Step Unit
 Width 1000mm (39.37")
 Height 185mm (7.28")
 Depth 430mm (16.92")
 Split on one face, smooth
 on one face
Individually Packaged

SPLIT COLORS

Note: Coloured wall units also available as custom order. Minimum quantities apply.



GREYFIELD - Split

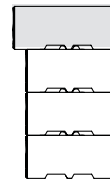


NATURAL - Split



TIMBERWOOD - Split

Proterra™ Smooth Coping



Split
 Coping and Wall
 (Coping overhangs one side)

SPECIFICATIONS

Bundle Specifications

Per Section Specifications

| PROTERRA™ (SPLIT) | Layers | Sq. Ft. | Lin. Ft. | Pieces | Weight | Sections | Sq. Ft. | Lin. Ft. | Pieces | Weight | Weight/Piece |
|------------------------|--------|---------|----------|--------|--------|----------|---------|----------|--------|--------|--------------|
| Standard Unit | 3 | 18 | 29.5 | 9 | 3150 | Layer | 6 | 9.8 | 3 | 1050 | 350 |
| Standard | 3 | 6 | 9.8 | 3 | 3150 | Layer | 2 | 3.3 | 1 | 1050 | 350 |
| Double | | 6 | 9.8 | 3 | | | | | 1 | | 700 |
| Standard Corner | 3 | 22.4 | 36.9 | 9 | 2772 | Layer | 7.4 | 12.3 | 3 | 924 | 308 |
| Coping-Step Unit | 3 | 12 | 19.6 | 6 | 2388 | Layer | 4 | 6.5 | 2 | 796 | 398 |
| Coping Corner/End Unit | 3 | 15.6 | 25.7 | 6 | 2088 | Layer | 5.2 | 8.6 | 2 | 696 | 348 |

To find a dealer nearest you please visit:

OAKSpavers.com

Or, call us toll free at:

1.800.709.OAKS (6257) (Canada)

1.800.876.OAKS (6257) (USA)

Members of:



Product representations shown in this publication are intended to convey the general color, texture and appearance of the product. Variations may occur in the manufacturing and printing process. Always select from an actual product sample.