



eterna

SIZES



**100x300 Stone**  
 Width 100 mm (3.94")  
 Length 300 mm (11.81")  
 Thickness 100 mm (3.94")  
**Individually Packaged**



**100x400 Stone**  
 Width 100 mm (3.94")  
 Length 400 mm (15.75")  
 Thickness 100 mm (3.94")  
**Individually Packaged**

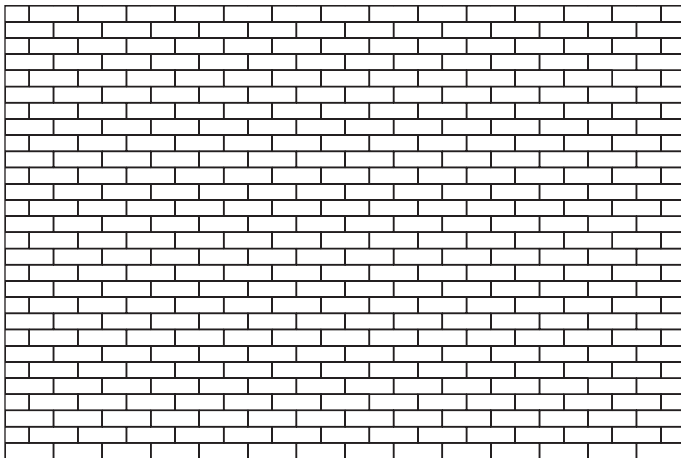


**200x600 Stone**  
 Width 200 mm (7.87")  
 Length 600 mm (23.62")  
 Thickness 100 mm (3.94")  
**Individually Packaged**

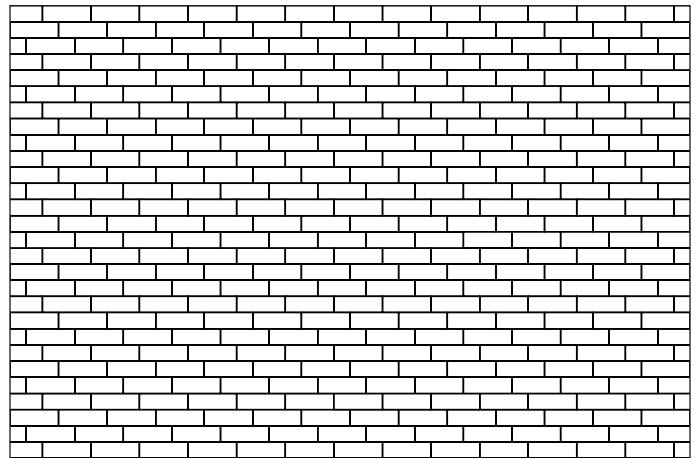


**400x600 Stone**  
 Width 400 mm (15.75")  
 Length 600 mm (23.62")  
 Thickness 100 mm (3.94")  
**Individually Packaged**

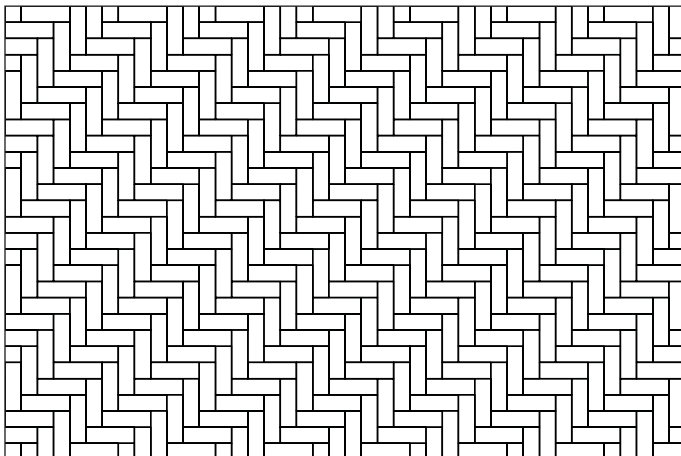
PATTERNS



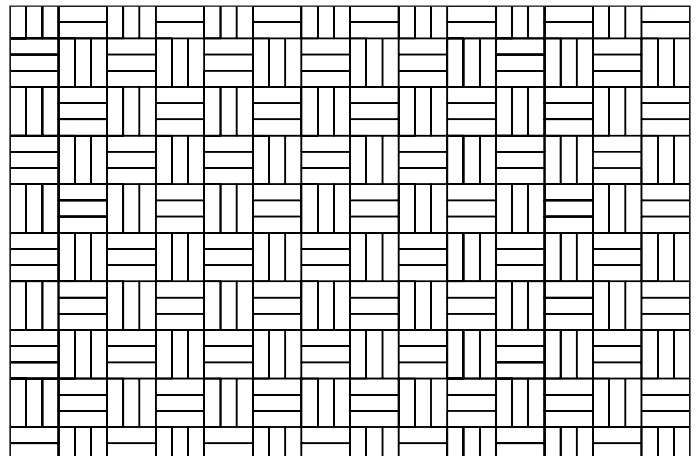
**PATTERN A** - 100X300 HALF RUNNING BOND



**PATTERN B** - 100X300 THIRD RUNNING BOND



**PATTERN C** - 100X300 HERRINGBONE

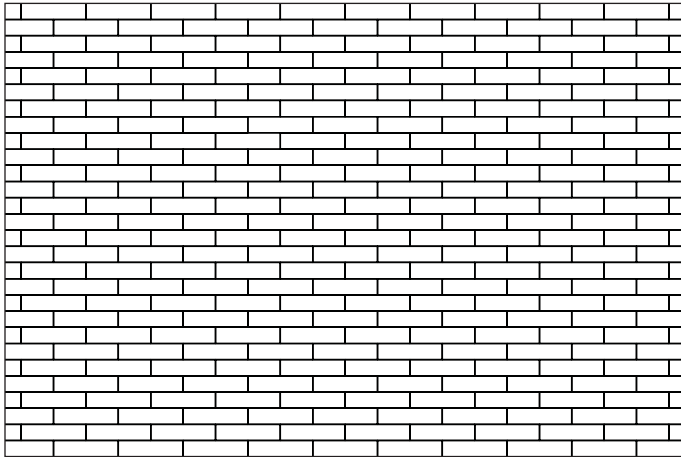


**PATTERN D** - 100X300 BASKET WEAVE

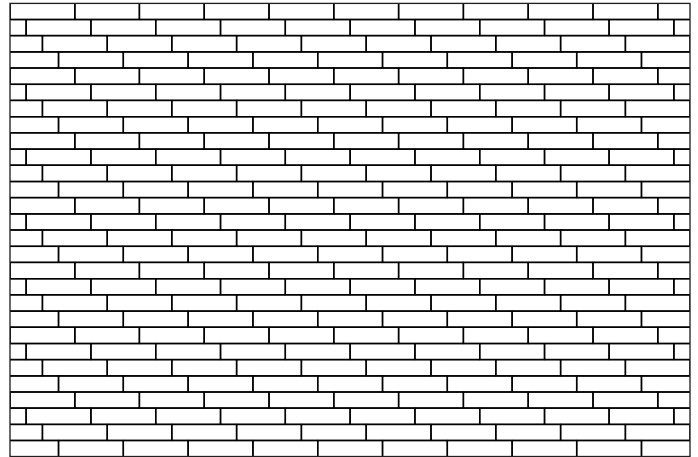


eterna

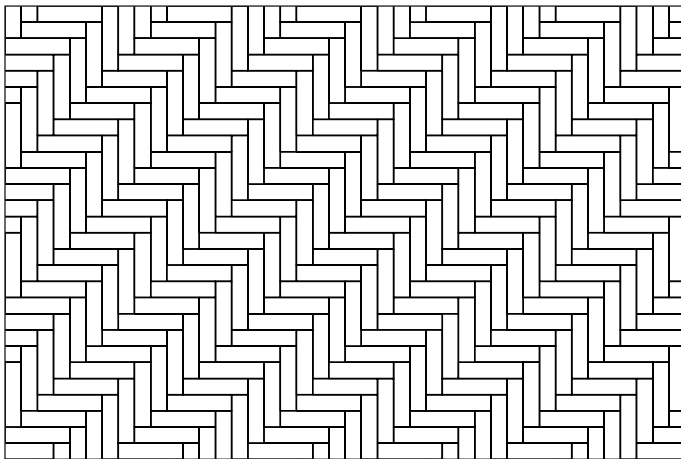
PATTERNS



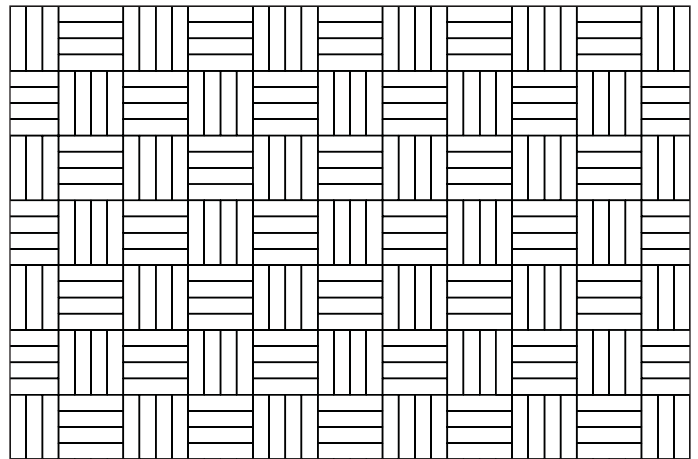
**PATTERN E** - 100X400 HALF RUNNING BOND



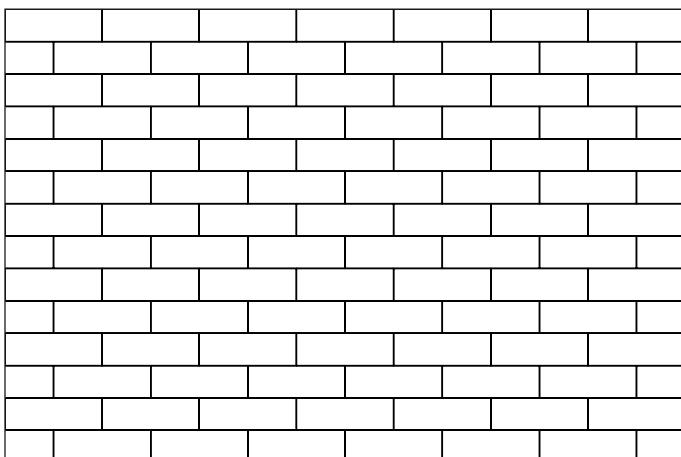
**PATTERN F** - 100X400 QUARTER RUNNING BOND



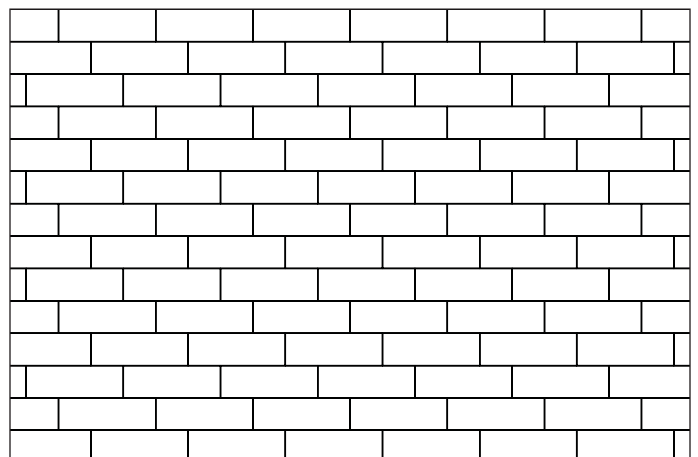
**PATTERN G** - 100X400 HERRINGBONE



**PATTERN H** - 100X400 BASKET WEAVE



**PATTERN I** - 200X600 HALF RUNNING BOND

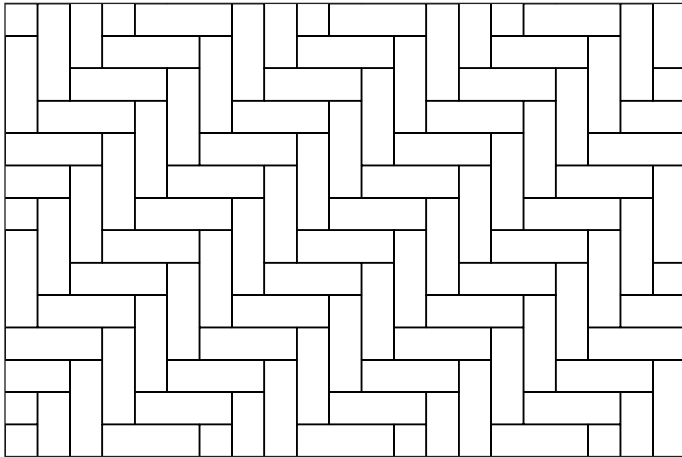


**PATTERN J** - 200X600 THIRD RUNNING BOND

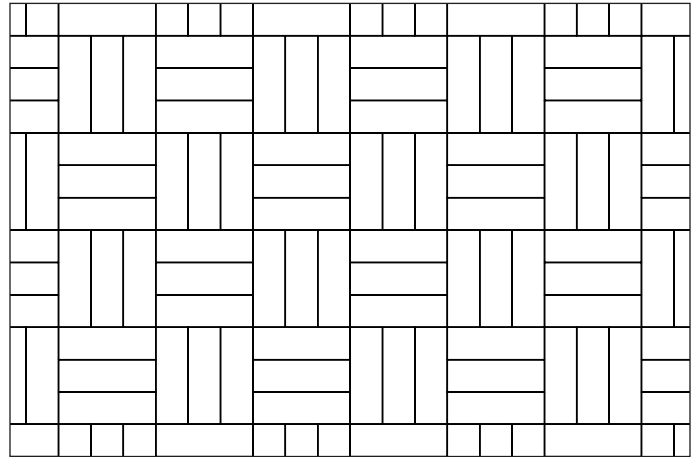


eterna

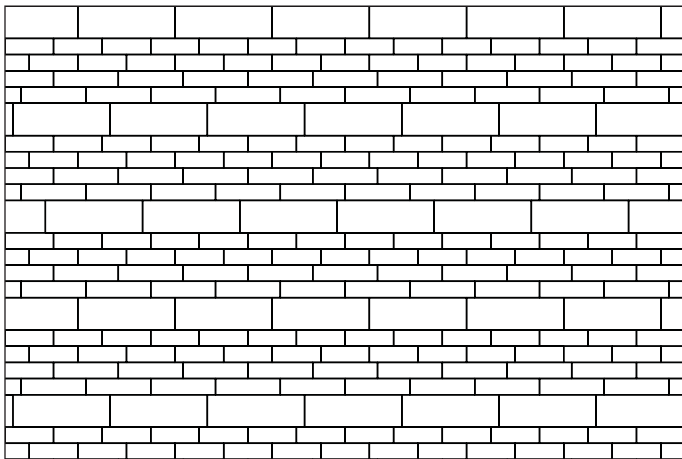
PATTERNS



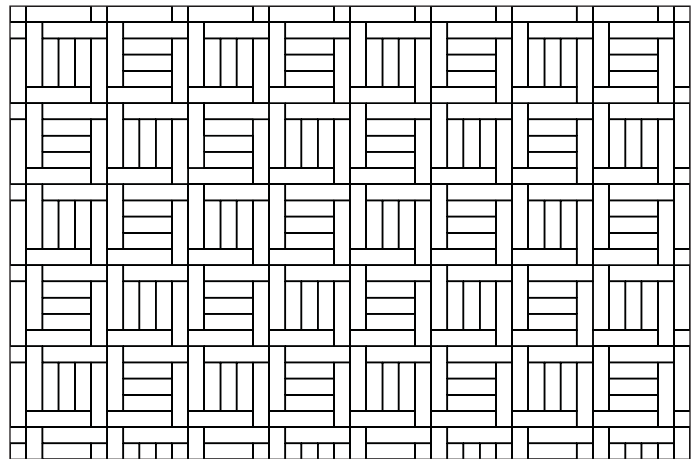
**PATTERN K** - 200X600 HERRINGBONE



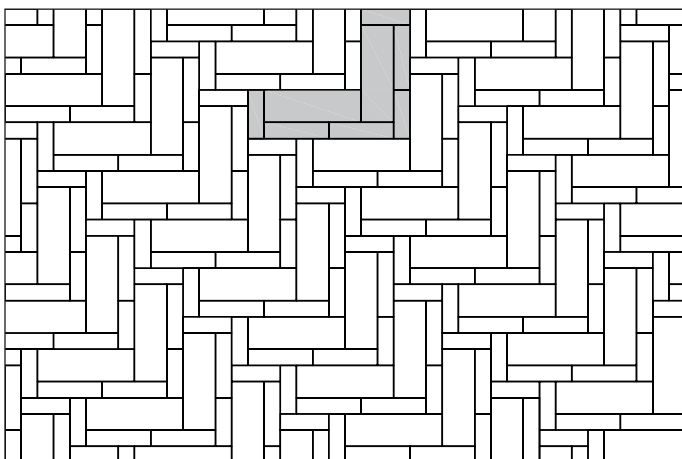
**PATTERN L** - 200X600 BASKET WEAVE



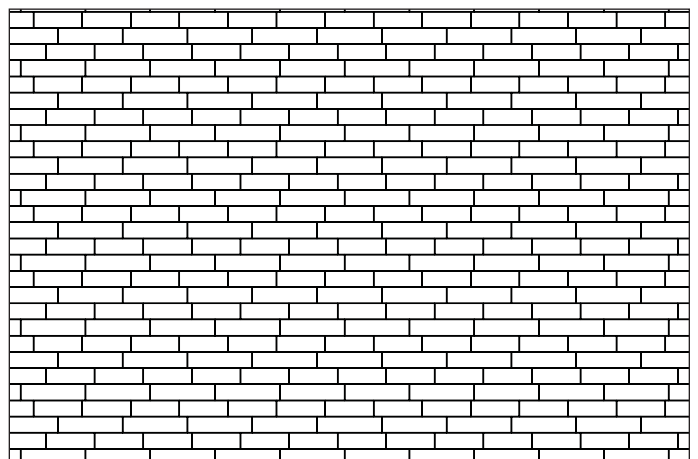
**PATTERN M** - MULTI SIZED RUNNING BOND



**PATTERN N** - MODIFIED BASKET WEAVE



**PATTERN O** - MULTI SIZED L SHAPE

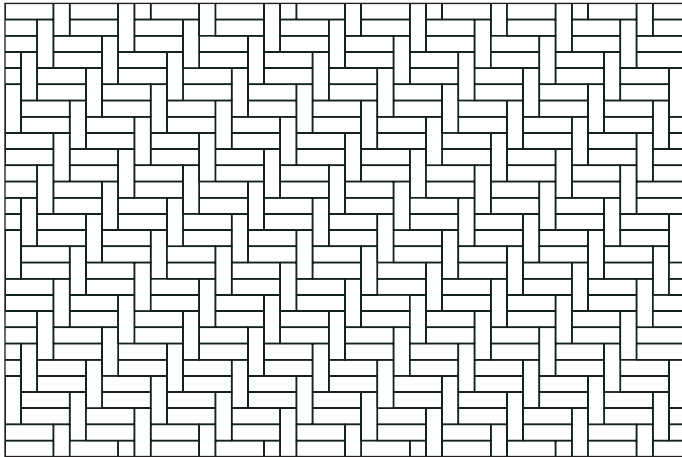


**PATTERN P** - 100X300 AND 100X400 RUNNING BOND

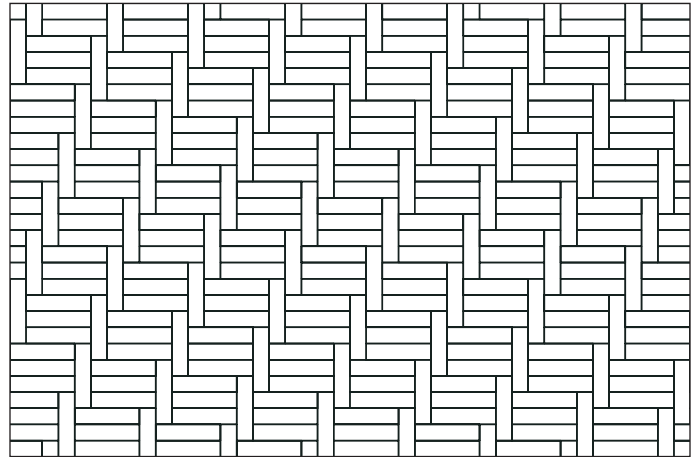


eterna

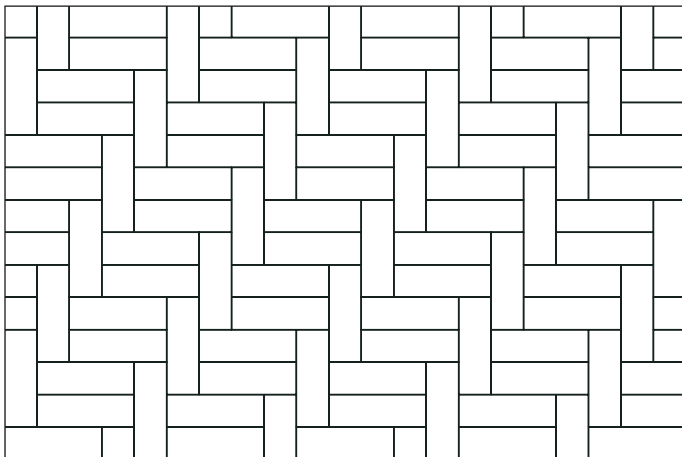
PATTERNS



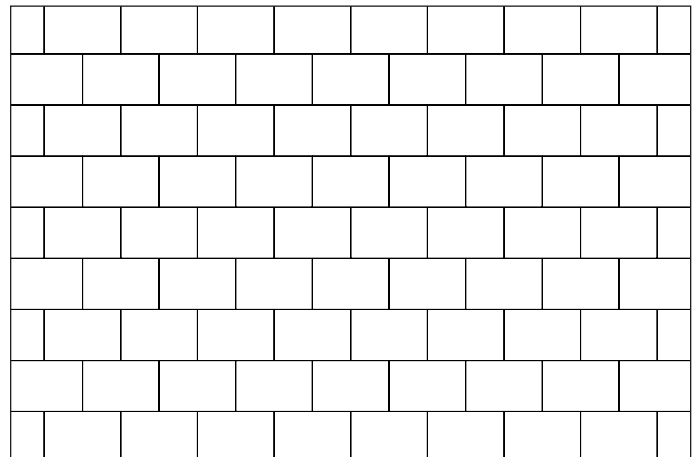
**PATTERN Q** - 100X300 CASCADE



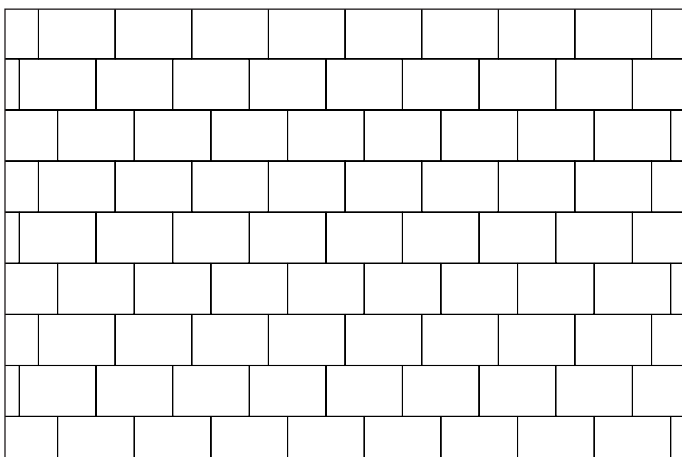
**PATTERN R** - 100X400 CASCADE



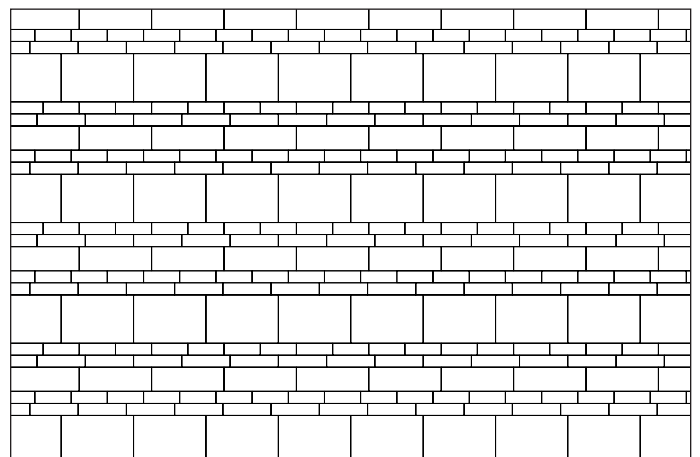
**PATTERN S** - 200X600 CASCADE



**PATTERN T** - 400X600 HALF RUNNING BOND



**PATTERN U** - 400X600 THIRD RUNNING BOND

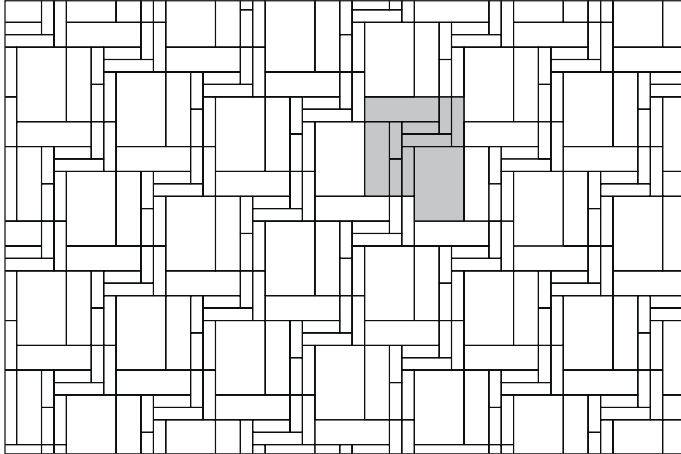


**PATTERN V** - MULTI-SIZED RUNNING BOND

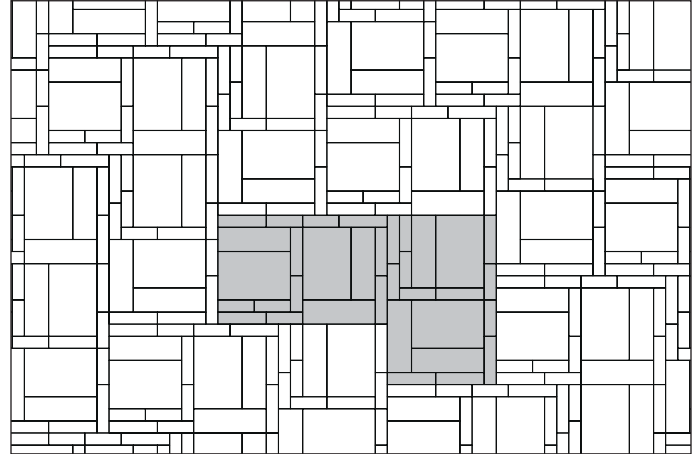


eterna

PATTERNS



PATTERN W - MULTI-SIZED L-SHAPE



PATTERN X - MULTI-SIZED RANDOM

NOTE: AUTOCad PAT files are available for all Eterna patterns.

PATTERN SPECIFICATIONS

Stone	100x300		100x400		200x600		400x600	
	%	Ratio	%	Ratio	%	Ratio	%	Ratio
Pattern A	100	1	0	0	0	0	0	0
Pattern B	100	1	0	0	0	0	0	0
Pattern C	100	1	0	0	0	0	0	0
Pattern D	100	1	0	0	0	0	0	0
Pattern E	0	0	100	1	0	0	0	0
Pattern F	0	0	100	1	0	0	0	0
Pattern G	0	0	100	1	0	0	0	0
Pattern H	0	0	100	1	0	0	0	0
Pattern I	0	0	0	0	100	1	0	0
Pattern J	0	0	0	0	100	1	0	0
Pattern K	0	0	0	0	100	1	0	0
Pattern L	0	0	0	0	100	1	0	0
Pattern M	33.3	4	33.3	3	33.3	1	0	0
Pattern N	36	3	74	4	0	0	0	0
Pattern O	20	3	26.7	3	53.3	2	0	0
Pattern P	50	4	50	3	0	0	0	0
Pattern Q	100	1	0	0	0	0	0	0
Pattern R	0	0	100	1	0	0	0	0
Pattern S	0	0	0	0	100	1	0	0
Pattern T	0	0	0	0	0	0	100	1
Pattern U	0	0	0	0	0	0	100	1
Pattern V	20	4	20	3	20	1	40	1
Pattern W	16.7	4	16.7	3	33.3	2	33.3	1
Pattern X	14.3	12	19	12	28.6	6	38.1	4

To find a dealer nearest you please visit:

**OAKSpavers.com**

Or, call us toll free at:

**1.800.709.OAKS (6257) (Canada)**

**1.800.876.OAKS (6257) (USA)**

Members of:



Product representations shown in this publication are intended to convey the general color, texture and appearance of the product. Variations may occur in the manufacturing and printing process. Always select from an actual product sample.